



# Priority Program SPP 1167 of the DFG Quantitative Precipitation Forecast



## Model Evaluation and Predictability Studies Using the COPS/D-PHASE Data Set

V. Wulfmeyer<sup>1</sup>, H.-S. Bauer<sup>1</sup>, T. Schwitalla<sup>1</sup>, F. Zus<sup>1</sup>, A. Behrendt<sup>1</sup>, T. Weusthoff<sup>2</sup>, M. Arpagaus<sup>2</sup>,  
T. Gorgas<sup>3</sup>, M. Dorninger<sup>3</sup>, R. Steinacker<sup>3</sup>, C. Wunram<sup>4</sup>

(1) Institute of Physics and Meteorology, University of Hohenheim, Stuttgart, Germany; (2) Swiss Federal Office for Meteorology and Climatology, Zurich, Switzerland; (3) Institute of Meteorology and Geophysics, University of Vienna, Austria; (4) World Data Center for Climate, Max Planck Institute for Meteorology, Hamburg, Germany

### News on COPS 4D data set

- Data analysis of remote sensing systems ongoing
- VERA analyses of European surface stations in preparation
- Unique European precipitation data set collected
- First European precipitation fields with different integration times in preparation (1, 3, 6, 12, 24h)
- Focus on surface, lidar, GPS, and MSG data for model evaluation and process studies

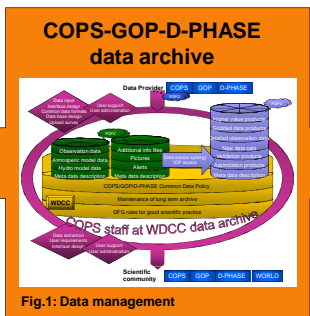
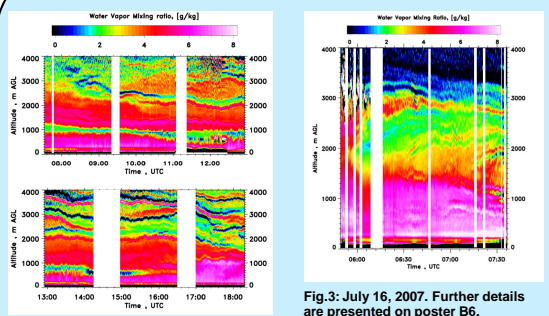


Fig.1: Data management

### D-PHASE ensemble evaluation

- Model evaluation with respect to precipitation thresholds using radar data and fuzzy logics
- Spatial distribution of precipitation and diurnal cycles of atmospheric variables at IPM
- GPS slant path delay statistics (also used for data assimilation studies at IPM)
- VERA fields at UniVie

### New DIAL results



DIAL reveals complexity of water-vapor field with high accuracy. The ABL usually is very shallow at Supersite H. Indications of mesoscale vortices?

### Overlays in COSMO-DE grid

- A common COPS framework is in preparation to overlay key atmospheric measurements using the software IDL
- Extension by VERA fields and D-PHASE model results ongoing

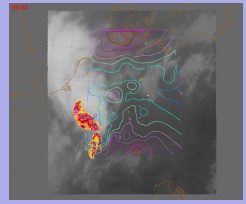
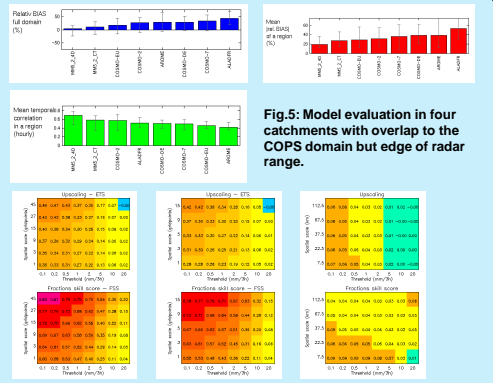


Fig.4: MSG IR, GPS IWV, and DWD radar data during IOP 9c, July, 20, 2007. Further results are shown on poster C4.

### Model evaluation at Meteo Swiss



### The European precipitation data set

